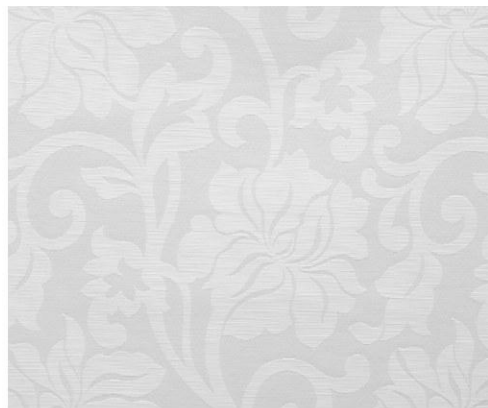




Roller Blinds Collection

All color for reference only, please refer to the sample fabric book for actual color and texture



☀ 82032A



☀ 82032B



☀ 82032D



☀ 82032E

Number	Composition	Max Width	Thickness	Weight	Black Out Rate
82032	100% polyester	280cm 230cm(DE)	0.63mm ±5%	380g/430g/m ² ±5%	blackout



☀ 82176A



☀ 82176B



☀ 82176C



☀ 82176D



☀ 82176E

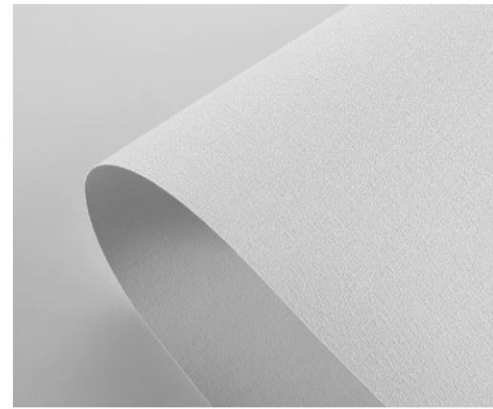


☀ 82176F



☀ 82176G

Number	Composition	Max Width	Thickness	Weight	Black Out Rate
82176	30% polyester +70% PVC	300cm	0.68mm±5%	663g/m ² ±5%	blackout



☀ 82168A



☀ 82168B



☀ 82168C

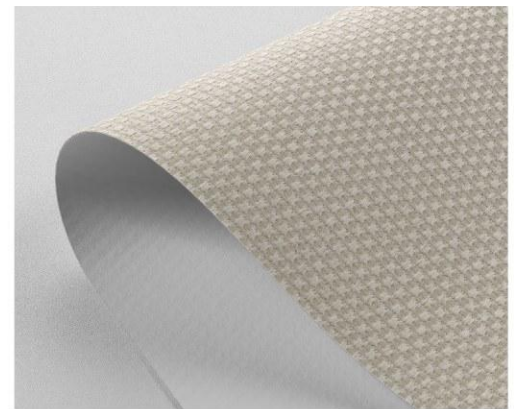


☀ 82168D



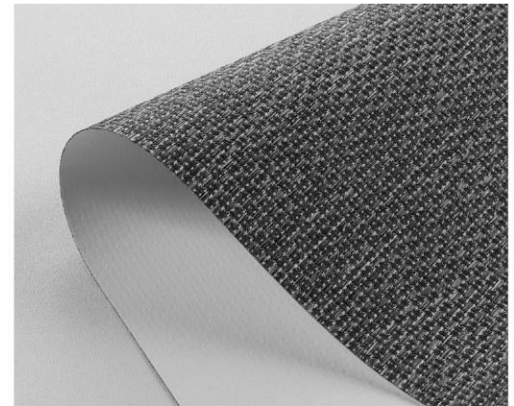
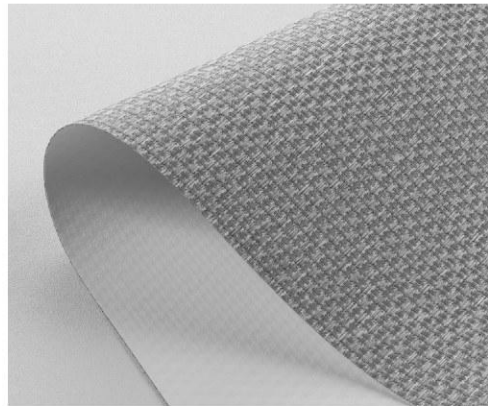
☀ 82168E

Number	Composition	Max Width	Thickness	Weight	Black Out Rate
82168	100% Polyester	300cm	0.5mm±5%	330g/m ² ±5%	blackout



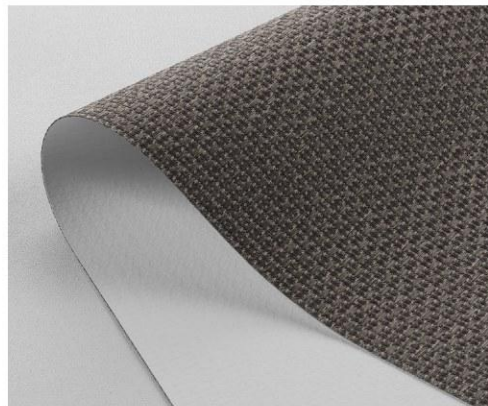
☀ 82178A

☀ 82178B



☀ 82178C

☀ 82178D



☀ 82178E

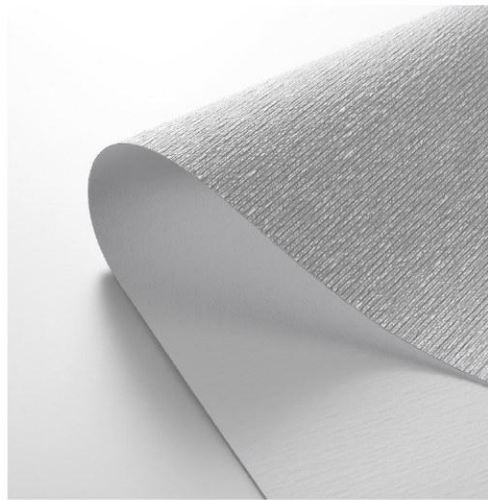
Number	Composition	Max Width	Thickness	Weight	Black Out Rate
82178	100% Polyester	280cm	0.65mm±5%	430g/m ² ±5%	blackout



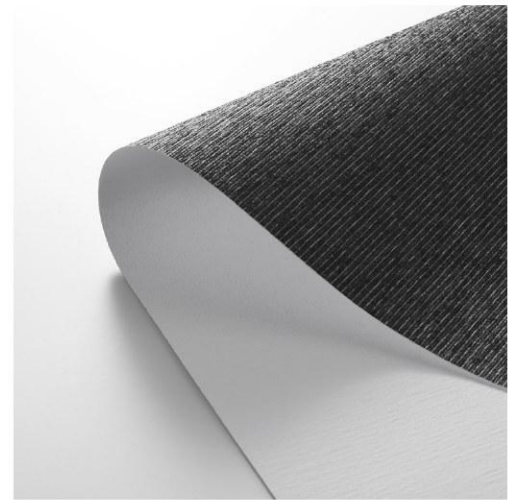
☀ 82141E



☀ 82141F



☀ 82141G



☀ 82141H

Number	Composition	Max Width	Thickness	Weight	Black Out Rate
82141	100% Polyester	300cm	0.65mm±5%	370g/m ² ±5%	blackout



☀ 82142A



☀ 82142B



☀ 82142C

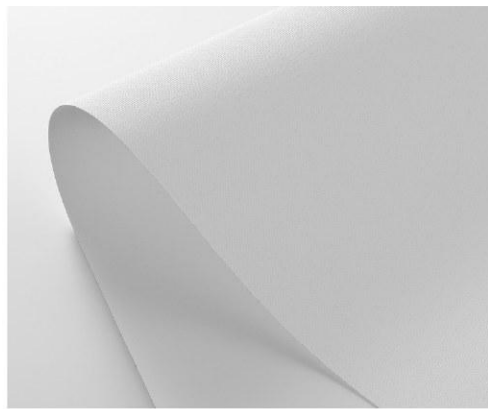


☀ 82142D



☀ 82142E

Number	Composition	Max Width	Thickness	Weight	Black Out Rate
82142	100% Polyester	300cm	0.53mm±5%	364g/m ² ±5%	blackout



☀ 82143A



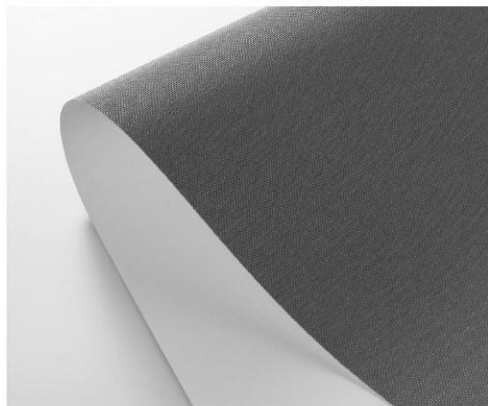
☀ 82143B



☀ 82143C



☀ 82143D



☀ 82143E

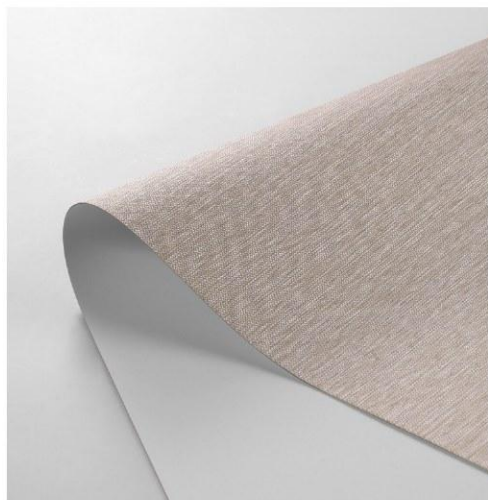
Number	Composition	Max Width	Thickness	Weight	Black Out Rate
82143	100% Polyester	300cm	0.6mm±5%	400g/m ² ±5%	blackout



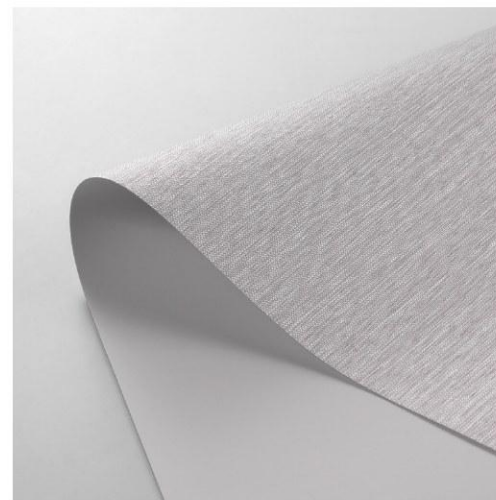
☀ 82077A



☀ 82077B

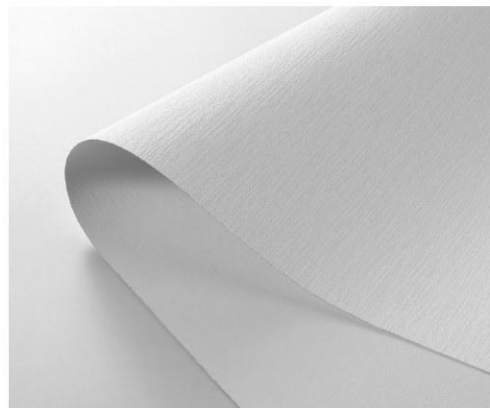


☀ 82077C



☀ 82077D

Number	Composition	Max Width	Thickness	Weight	Black Out Rate
82077	100% Polyester	300cm	0.53mm±5%	375g/m ² ±5%	blackout



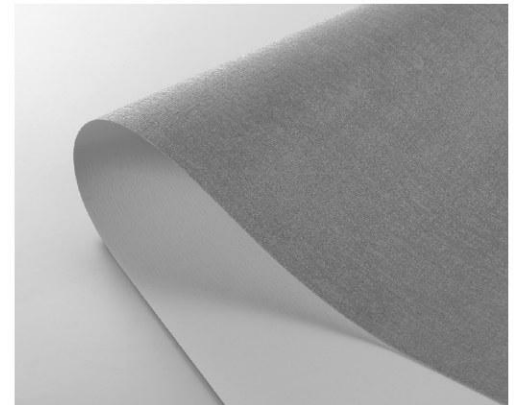
☀ 82164A



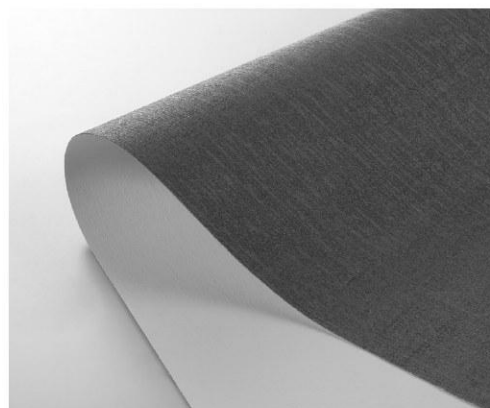
☀ 82164B



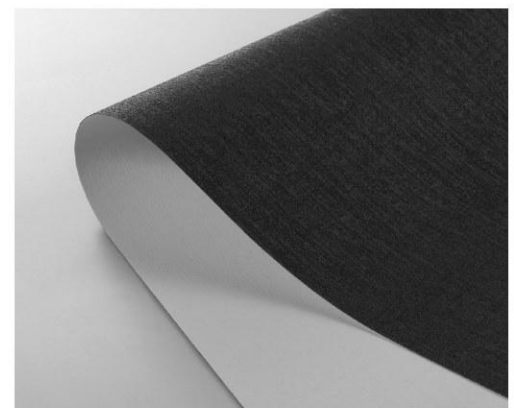
☀ 82164C



☀ 82164D

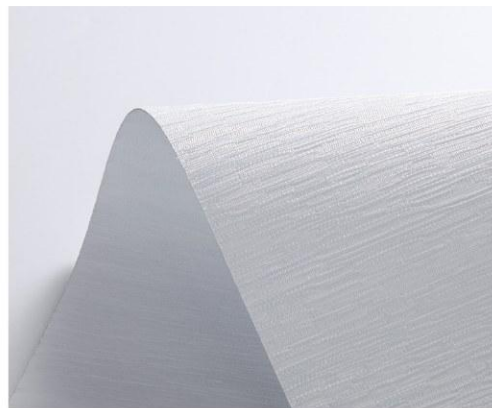


☀ 82164E

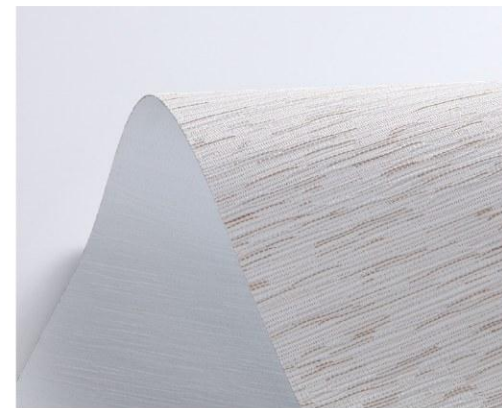


☀ 82164F

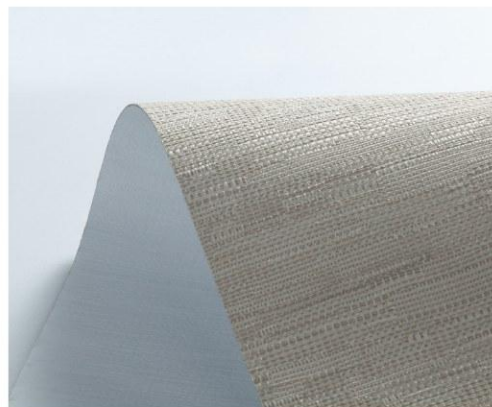
Number	Composition	Max Width	Thickness	Weight	Black Out Rate
82164	100% Polyester	300cm	0.61mm±5%	430g/m ² ±5%	blackout



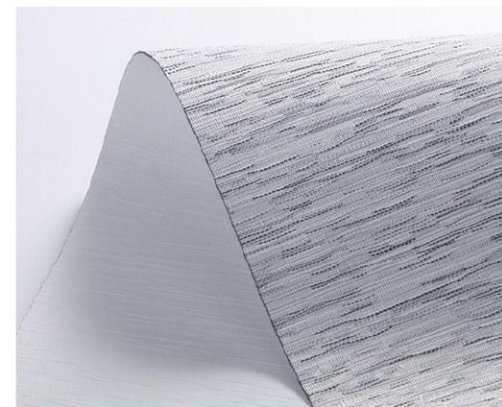
☀ 82083A



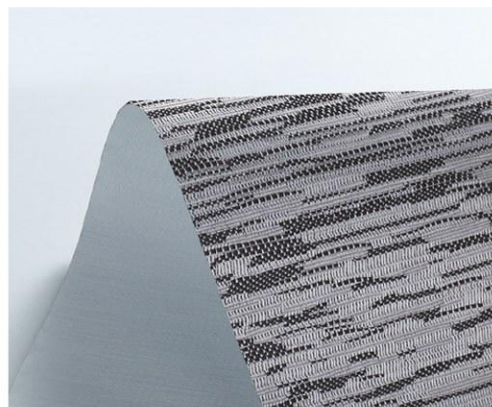
☀ 82083B



366g/m²±15% ☀ 82083C



☀ 82083D

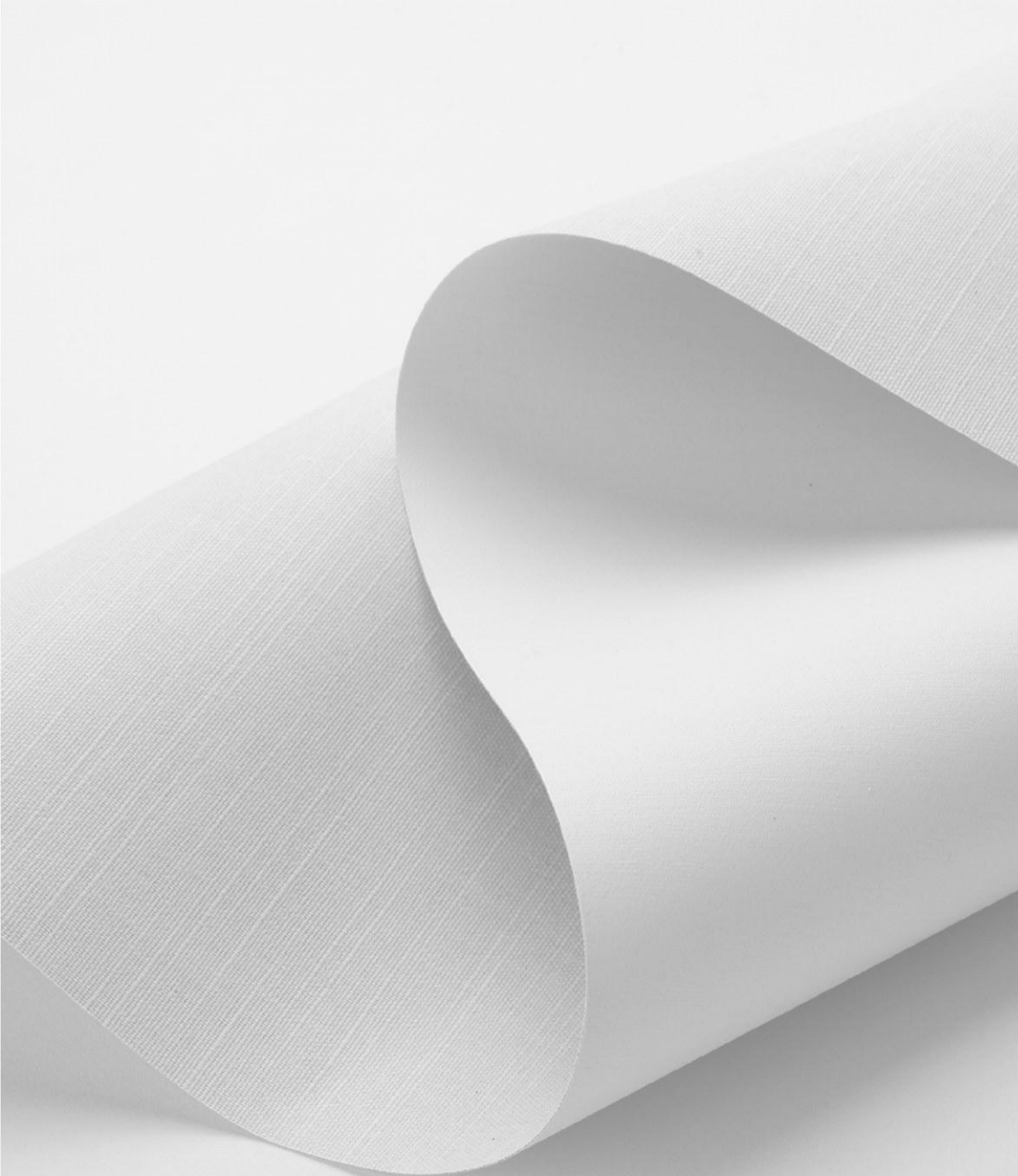


☀ 82083I



☀ 82083K

Number	Composition	Max Width	Thickness	Weight	Black Out Rate
82083	100% Polyester	300cm	0.45mm±0.05%	425g/m ² ±15%	blackout



☀ 82028F



☀ 82028G



☀ 82028H



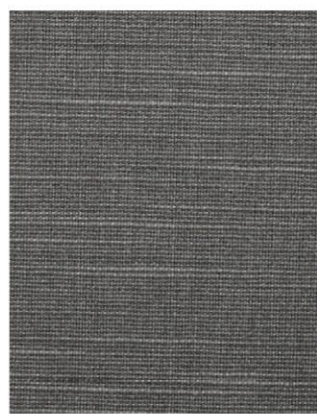
☀ 82028A



☀ 82028B

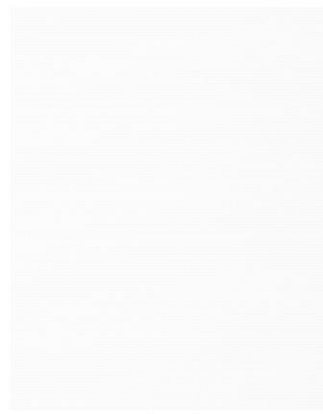
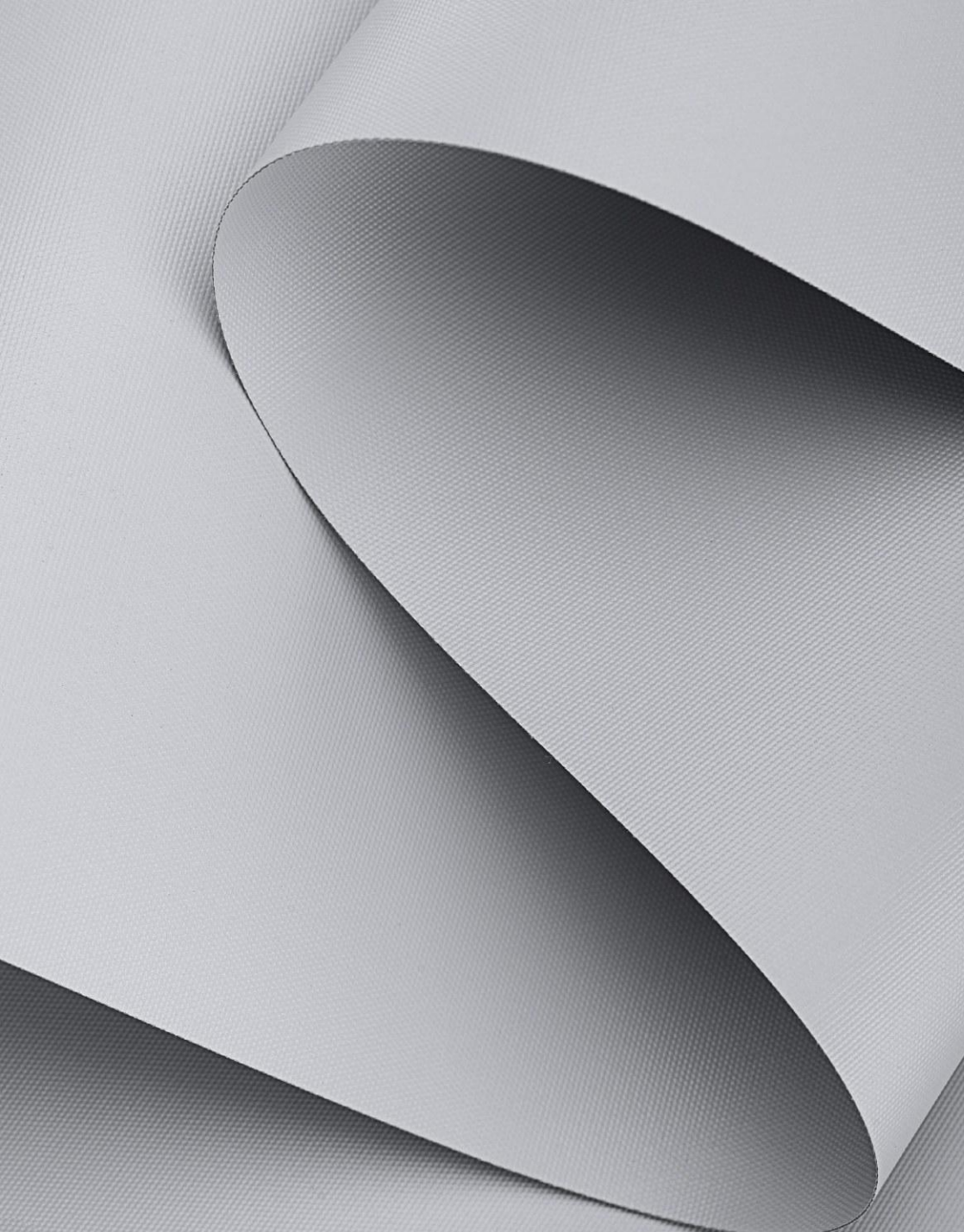


☀ 82028C



☀ 82028E

Number	Composition	Max Width	Thickness	Weight	Black Out Rate	Color fastness
82028	100% Polyester	300cm	0.5mm±5%	330g/m ² ±5%	blackout	6-8 Grade



☀ 82010G



☀ 82010V



☀ 82010J



☀ 82010T



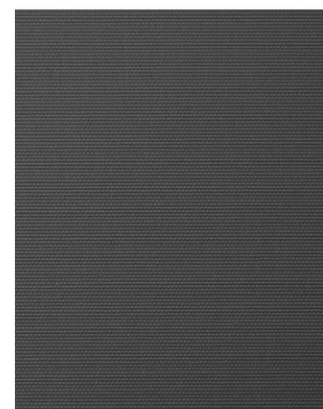
☀ 82010E



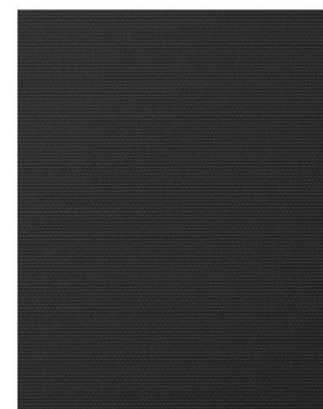
☀ 82010L



☀ 82010Y

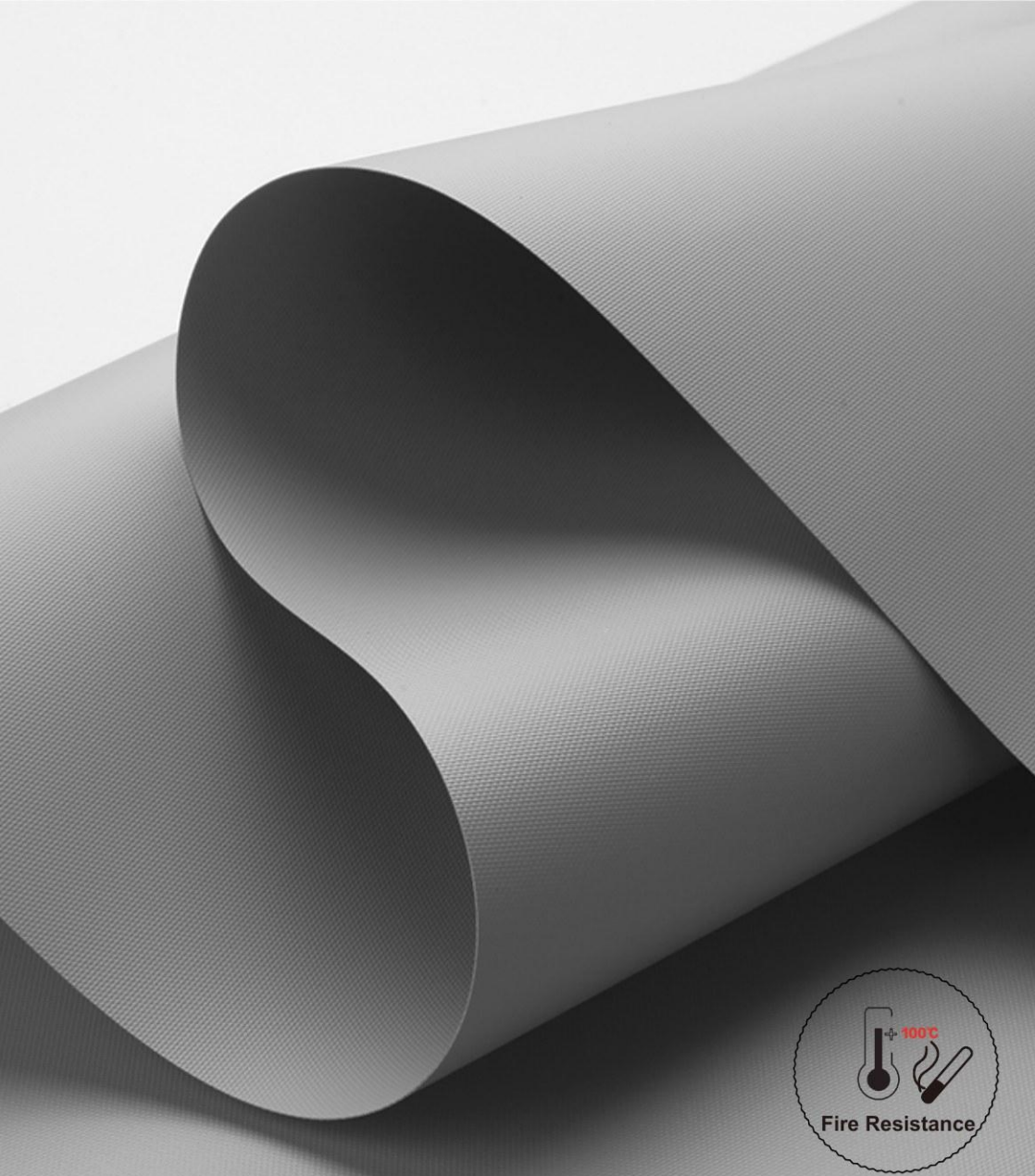


☀ 82010I

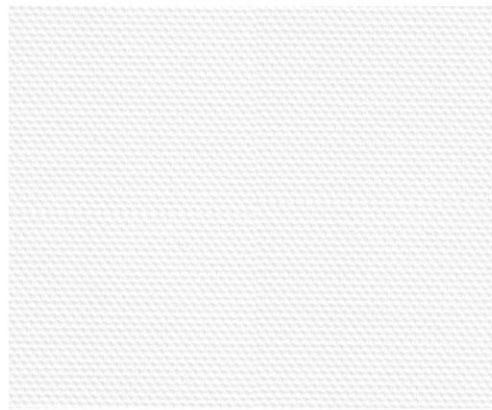


☀ 82010M

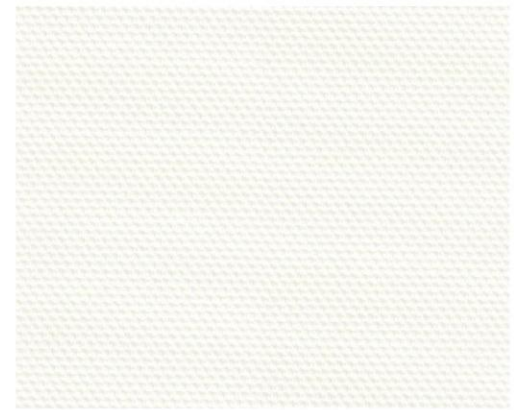
Number	Composition	Max Width	Thickness	Weight	Black Out Rate
82010	100% Polyester	300cm	0.3mm±0.05%	310g/m ² ±10%	blackout



Number	Composition	Max Width	Thickness	Weight	Black Out Rate	Color fastness
82026	40% Fiberglass + 60% PVC	200/250/300cm	0.38mm±5%	480g/m ² ±5%	blackout	6-8 Grade



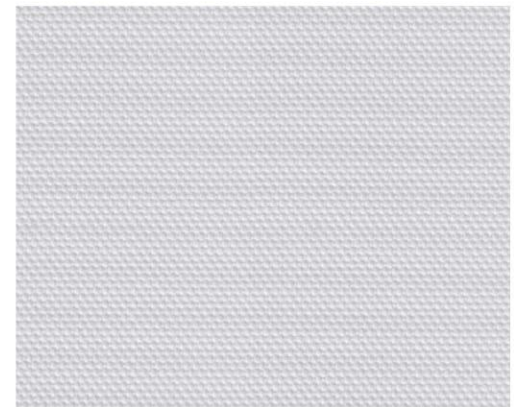
☀ 82026A



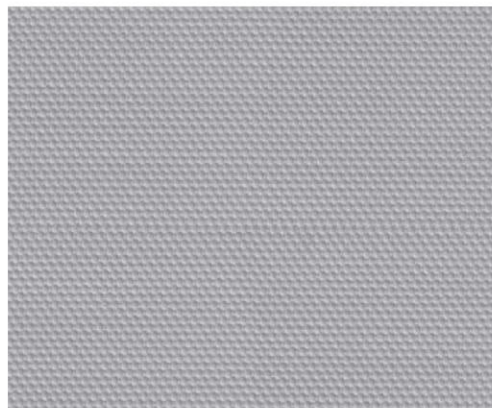
☀ 82026B



☀ 82026C



☀ 82026E



☀ 82026F