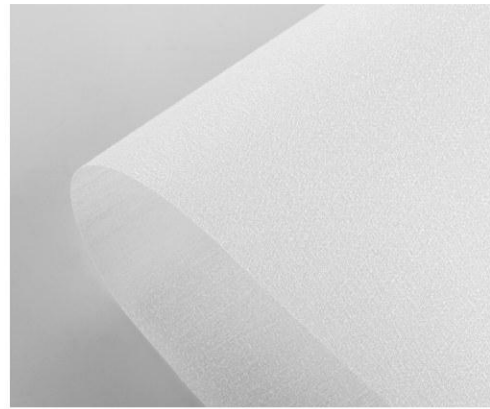




Roller Blinds Collection

All color for reference only, please refer to the sample fabric book for actual color and texture



☀ 82167A



☀ 82167B



☀ 82167C

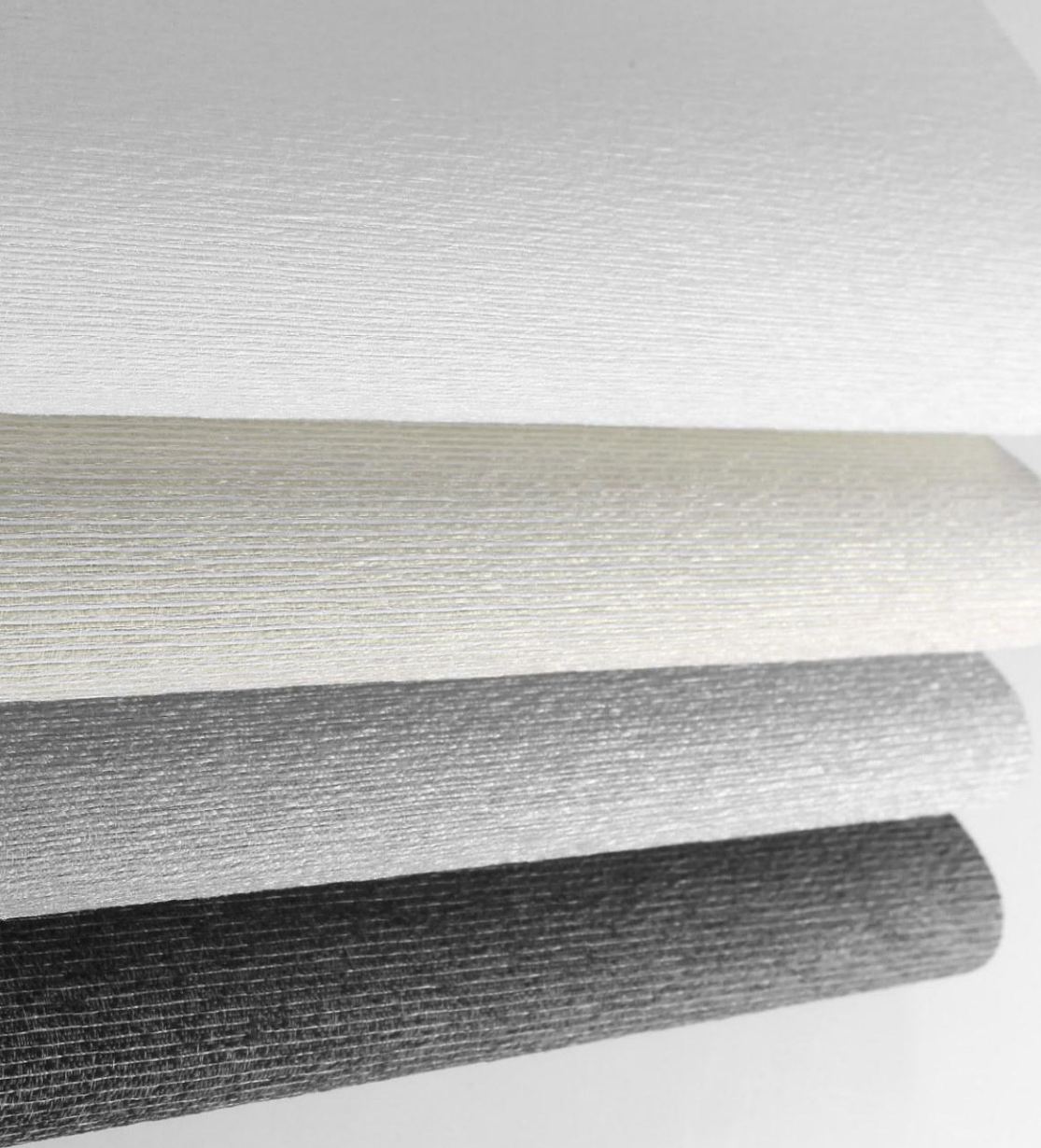


☀ 82167D

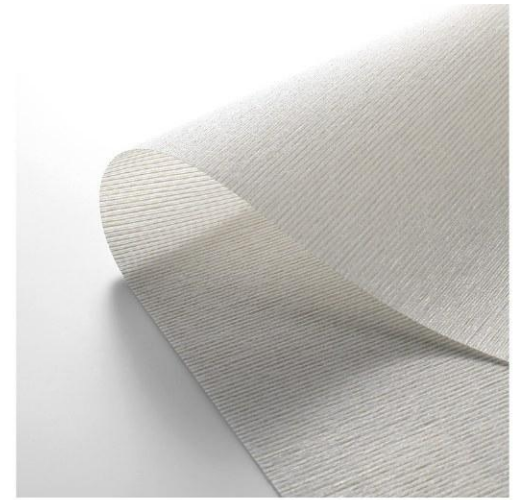


☀ 82167E

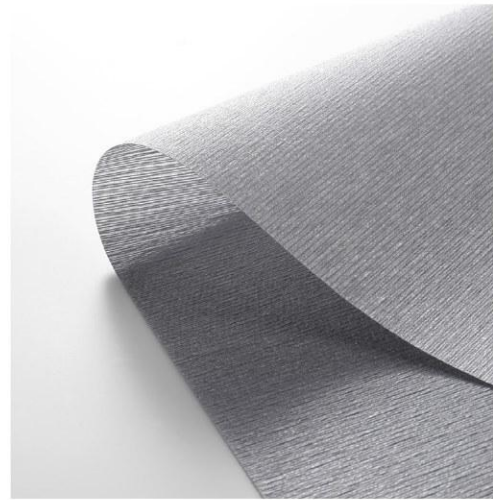
Number	Composition	Max Width	Thickness	Weight	Black Out Rate
82167	100% polyester	300cm	0.4mm ±5%	220g/m ² ±5%	semi blackout



☀ 82141A



☀ 82141B



☀ 82141C



☀ 82141D

Number	Composition	Max Width	Thickness	Weight	Black Out Rate
82141	100% Polyester	300cm	0.50mm±5%	155g/m ² ±5%	Transparent



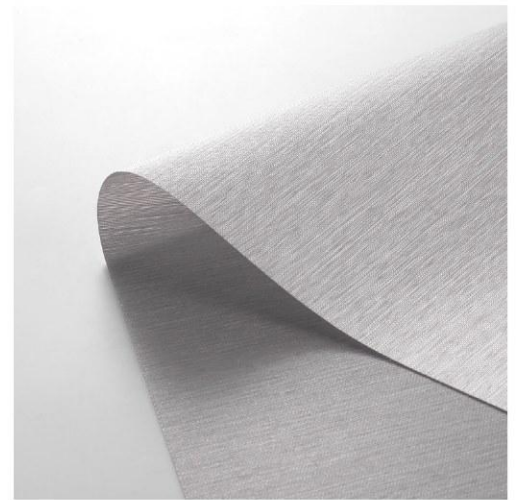
* 82076A



* 82076B

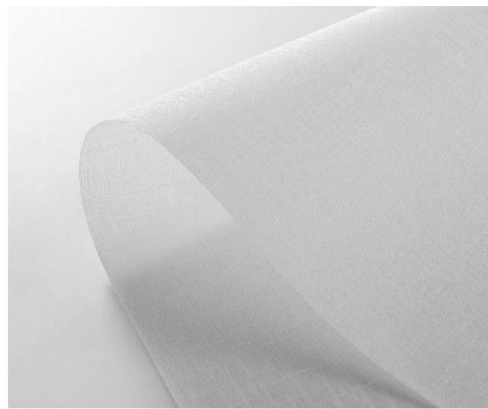


* 82076C



* 82076D

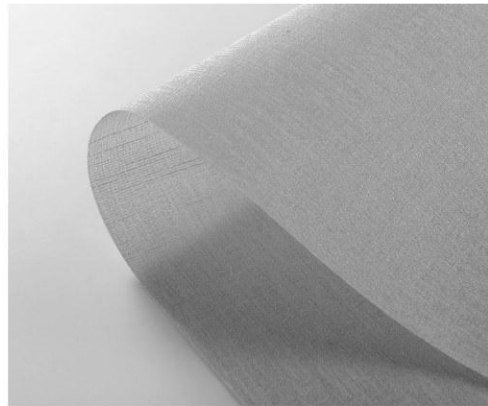
Number	Composition	Max Width	Thickness	Weight	Black Out Rate
82076	100% Polyester	300cm	0.33mm±5%	175g/m ² ±5%	semi blackout



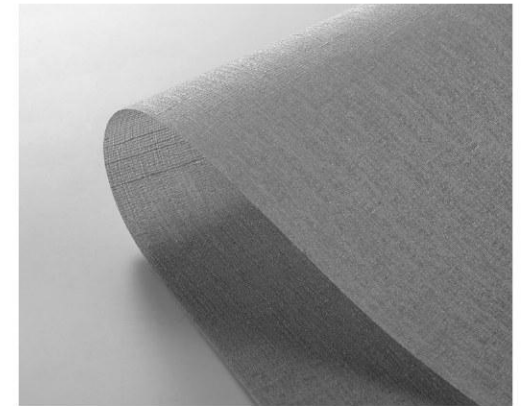
☀ 82156A



☀ 82156B



☀ 82156C



☀ 82156D



☀ 82156E



☀ 82156F

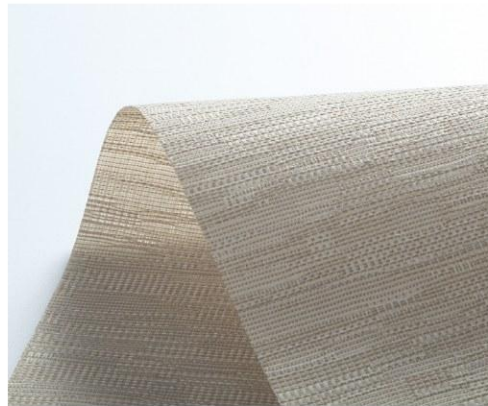
Number	Composition	Max Width	Thickness	Weight	Black Out Rate
82156	100% Polyester	300cm	0.45mm±5%	210g/m ² ±5%	Transparent



☀ 82082A



☀ 82082B



☀ 82082C 180g/m²±3%



☀ 82082D



☀ 82082I

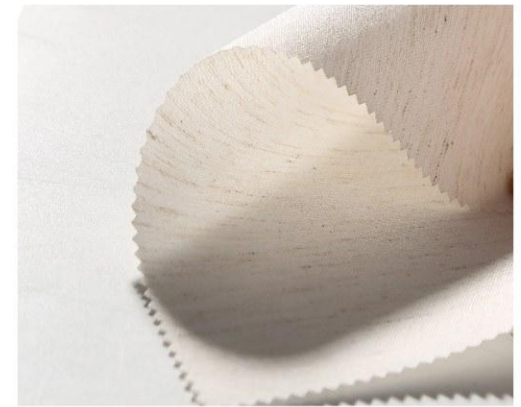


☀ 82082K

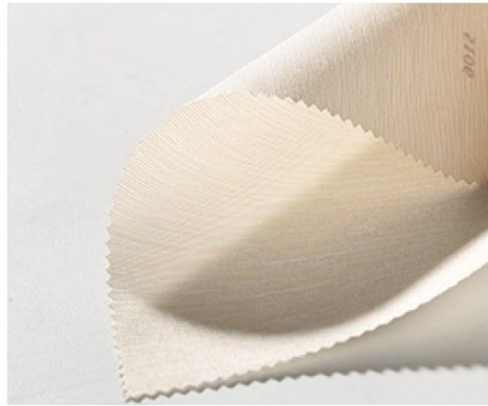
Number	Composition	Max Width	Thickness	Weight	Black Out Rate
82082	100% Polyester	300cm	0.45mm±0.05%	240g/m ² ±5%	semi blackout



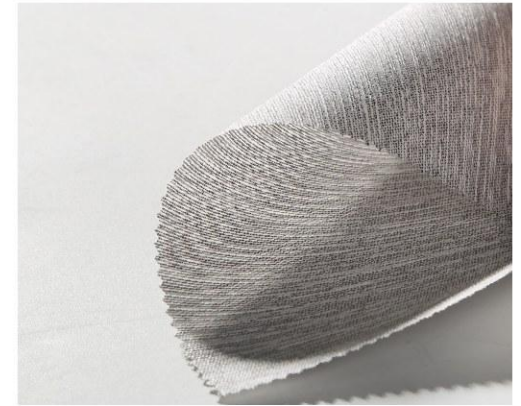
☀ 82067M



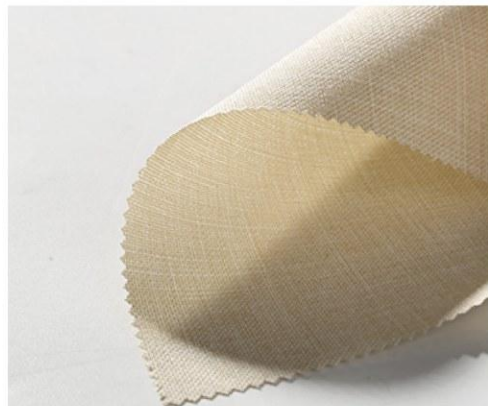
☀ 82067N



☀ 82067G



☀ 82067H



☀ 82067I



☀ 82067U

Number	Composition	Max Width	Thickness	Weight	Black Out Rate
82067M					semi
82067N	T/L80/20	230/300cm	0.45mm±0.05%	185g/m ² ±5%	blackout
82067G/H	100%Polyester				
82067I/U		230cm			



20%
Linen

☀ 82067K



13%
Linen

☀ 82067L



☀ 82067A



☀ 82067B



☀ 82067C



☀ 82067V

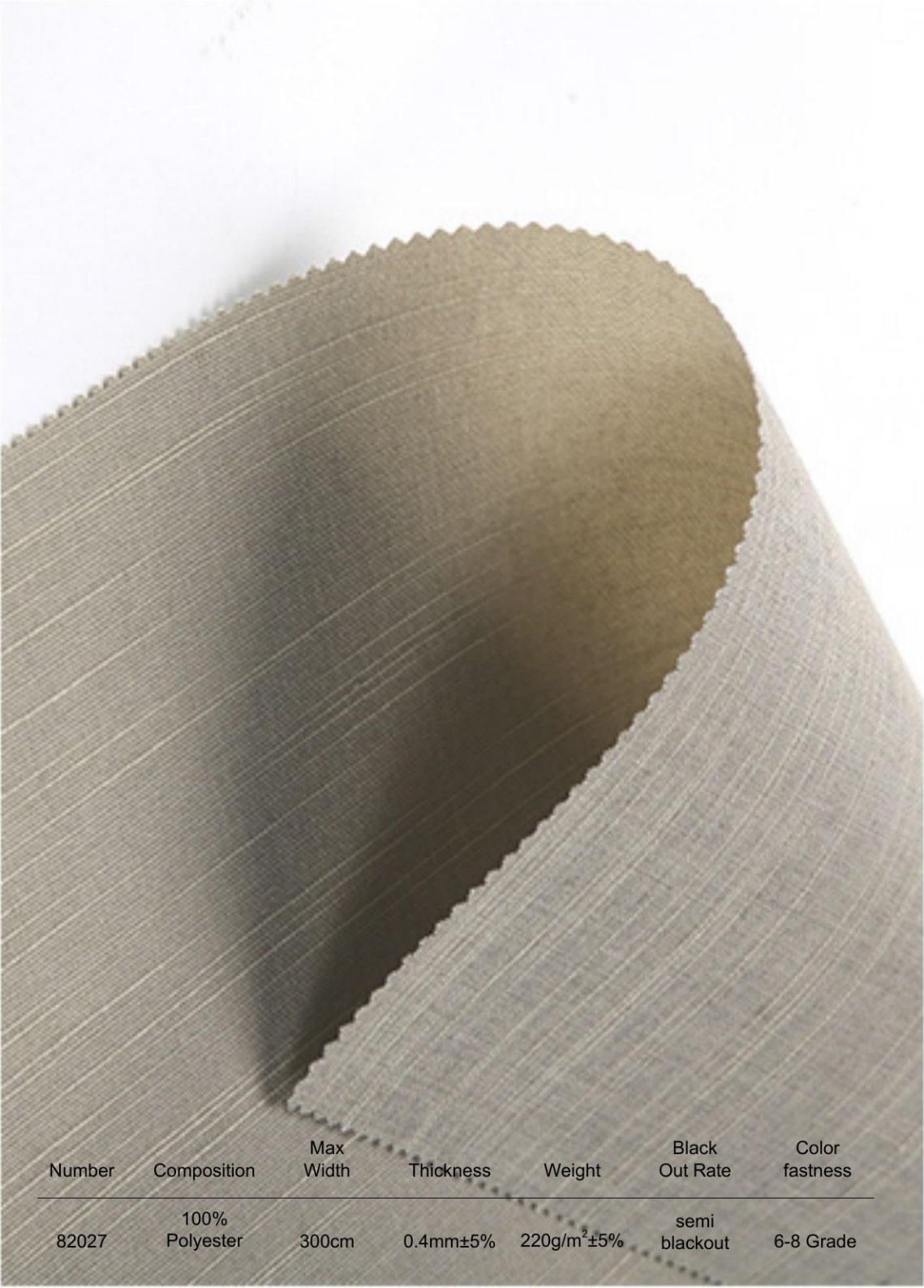


☀ 82067O



☀ 82067P

Number	Composition	Max Width	Black Out Rate	Weight
82067K	T/L80/20	230cm	blackout	330g/m ² ±5%
82067L				360g/m ² ±5%
82067A/B	100% Polyester	230cm	blackout	320g/m ² ±5%
82067O/P				280g/m ² ±5%
82067C/V				350g/m ² ±5%



☀ 82027F



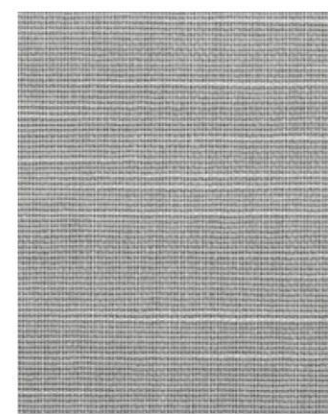
☀ 82027G



☀ 82027A



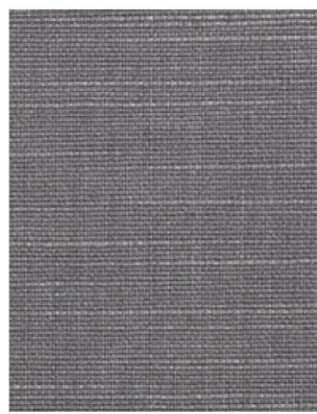
☀ 82027B



☀ 82027C



☀ 82027E

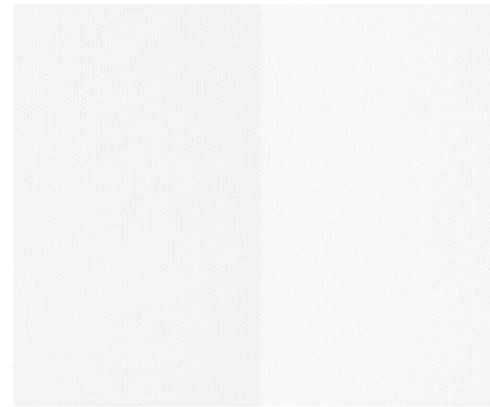


☀ 82027H

Number	Composition	Max Width	Thickness	Weight	Black Out Rate	Color fastness
82027	100% Polyester	300cm	0.4mm±5%	220g/m ² ±5%	semi blackout	6-8 Grade

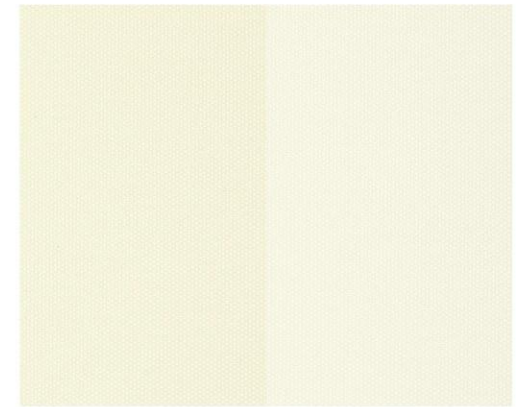
Semi-Blackout

Number	Composition	Max Width	Weight	Black Out Rate
82086	100%Polyester	230cm	190g/m ² ±5%	semi blackout



 82086W

 82086F

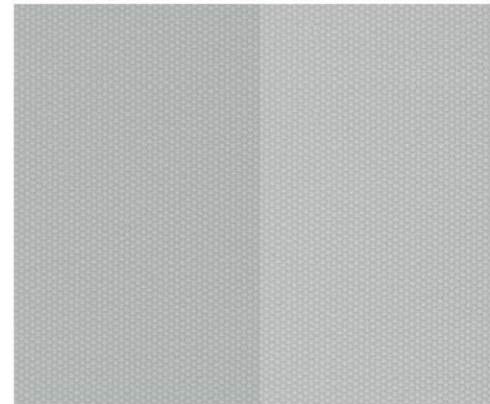


 82086B

 82086G

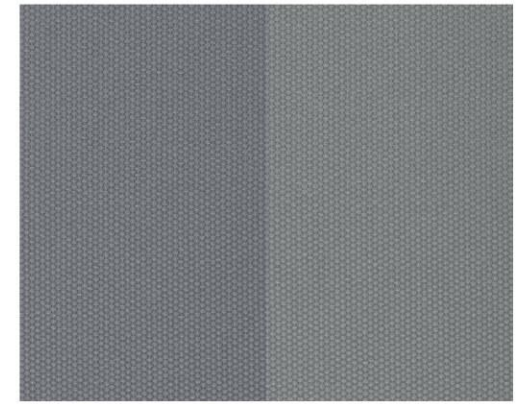
Blackout

Number	Composition	Max Width	Weight	Black Out Rate
82086	100%Polyester	230cm	330g/m ² ±15%	blackout



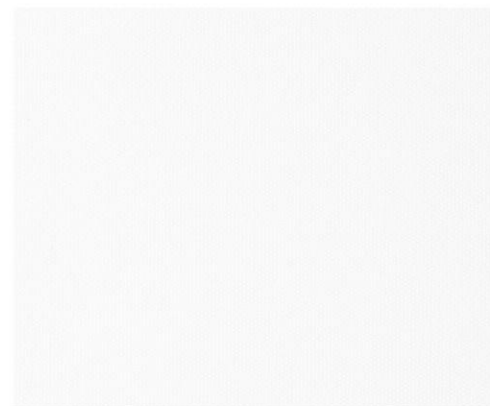
 82086C

 82086H

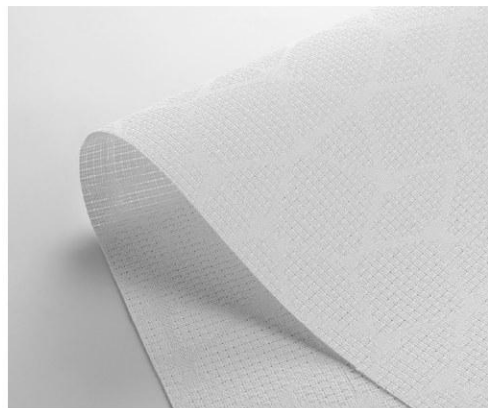
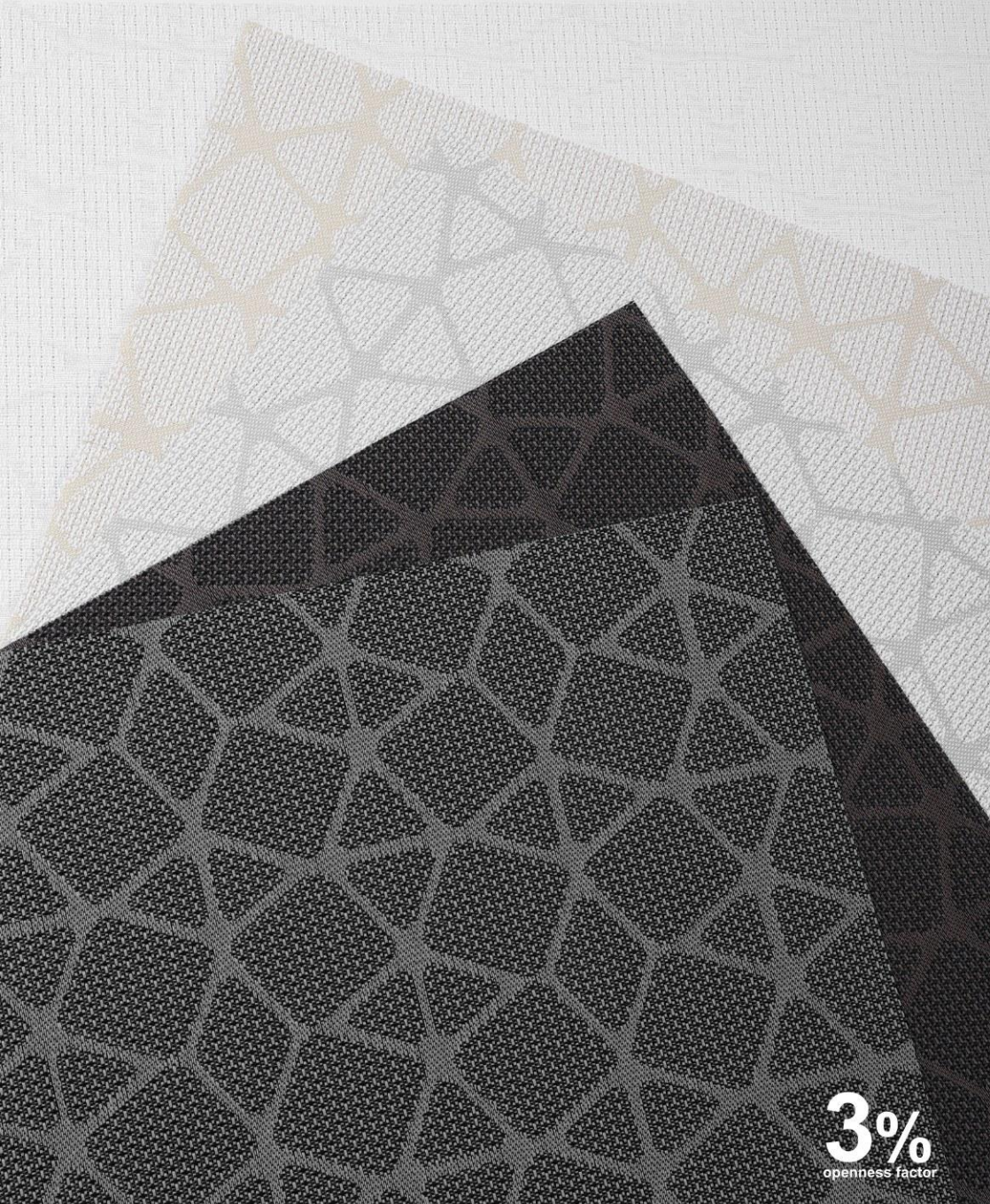


 82086E

 82086J



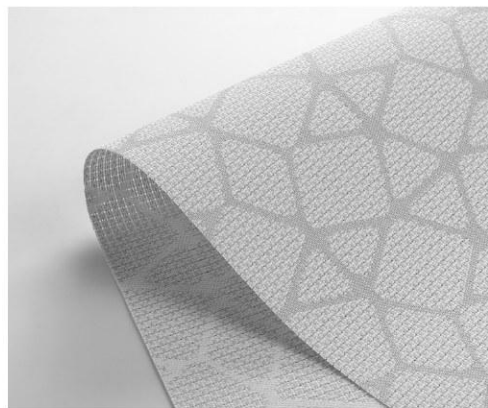
 82086K



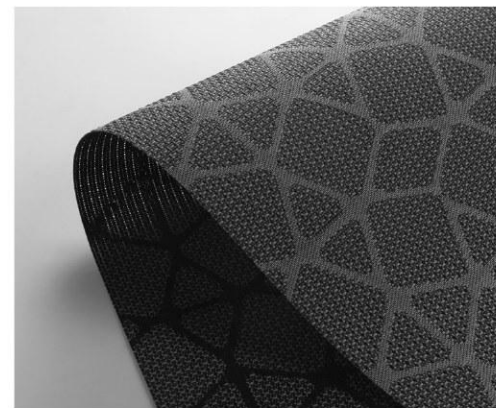
☀ 82132D



☀ 82132E



☀ 82132F



☀ 82132G



☀ 82132H

Number	Composition	Max Width	Thickness	Weight	Black Out Rate
82132	30% polyester +70% PVC	300cm	0.7mm ±5%	467g/m ² ±5%	Transparent

3%
openness factor



1%
openness factor



82132A



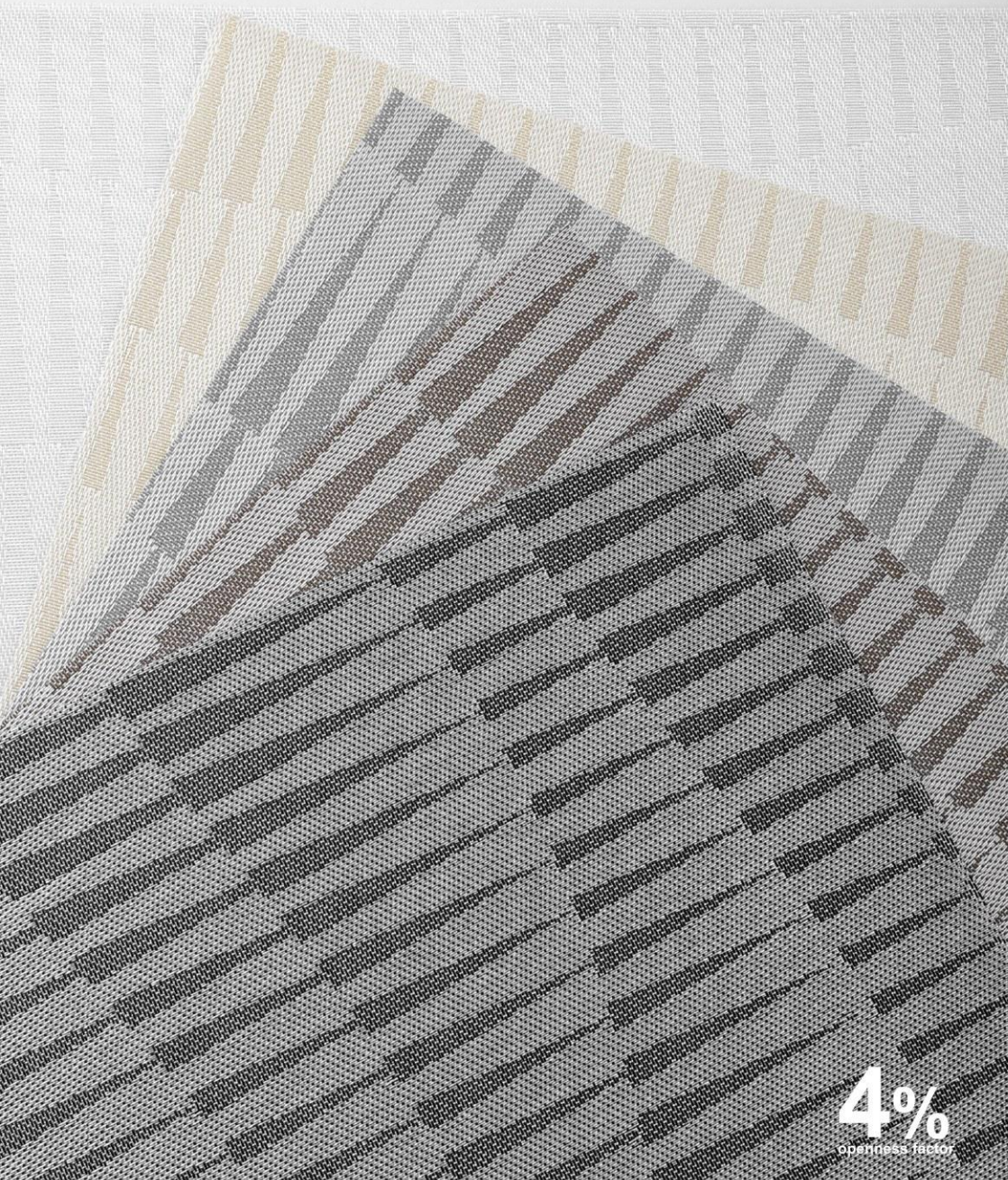
82132B



82132C

Number	Composition	Max Width	Thickness	Weight	Black Out Rate
82132	30% Polyester + 70% PVC	300 cm	0.70mm ± 5%	467g/m ² ± 5%	semi blackout





☀ 82181A



☀ 82181B



☀ 82181C



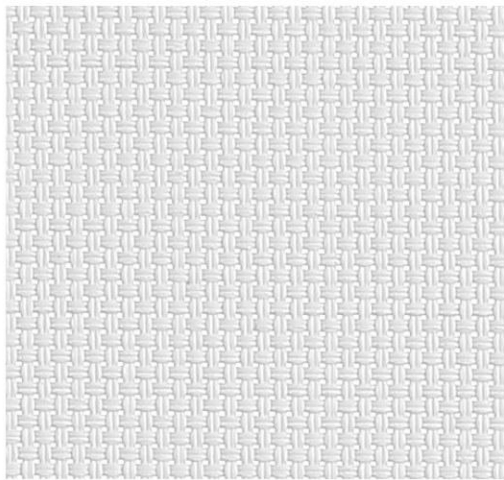
☀ 82181D



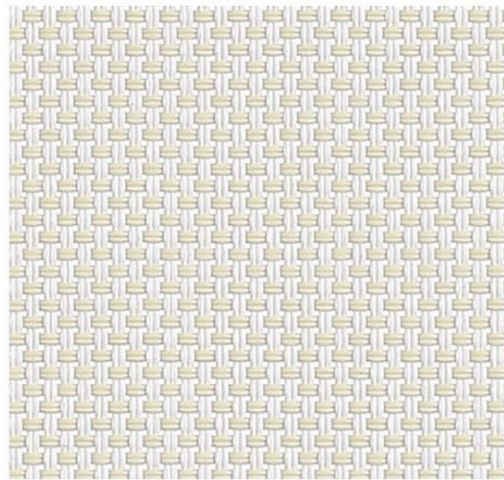
☀ 82181E

4%
openness factor

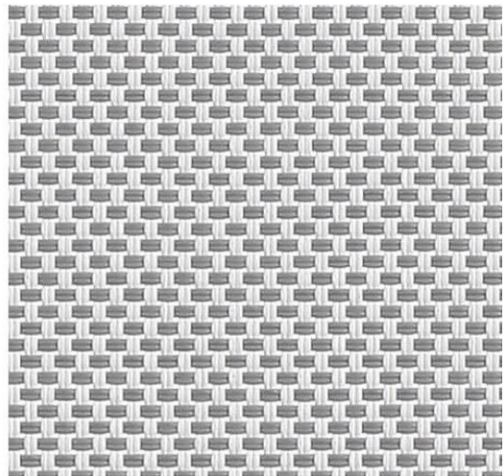
Number	Composition	Max Width	Thickness	Weight	Black Out Rate
82181	30% polyester +70% PVC	300cm	0.7mm ±5%	480g/m ² ±5%	Transparent



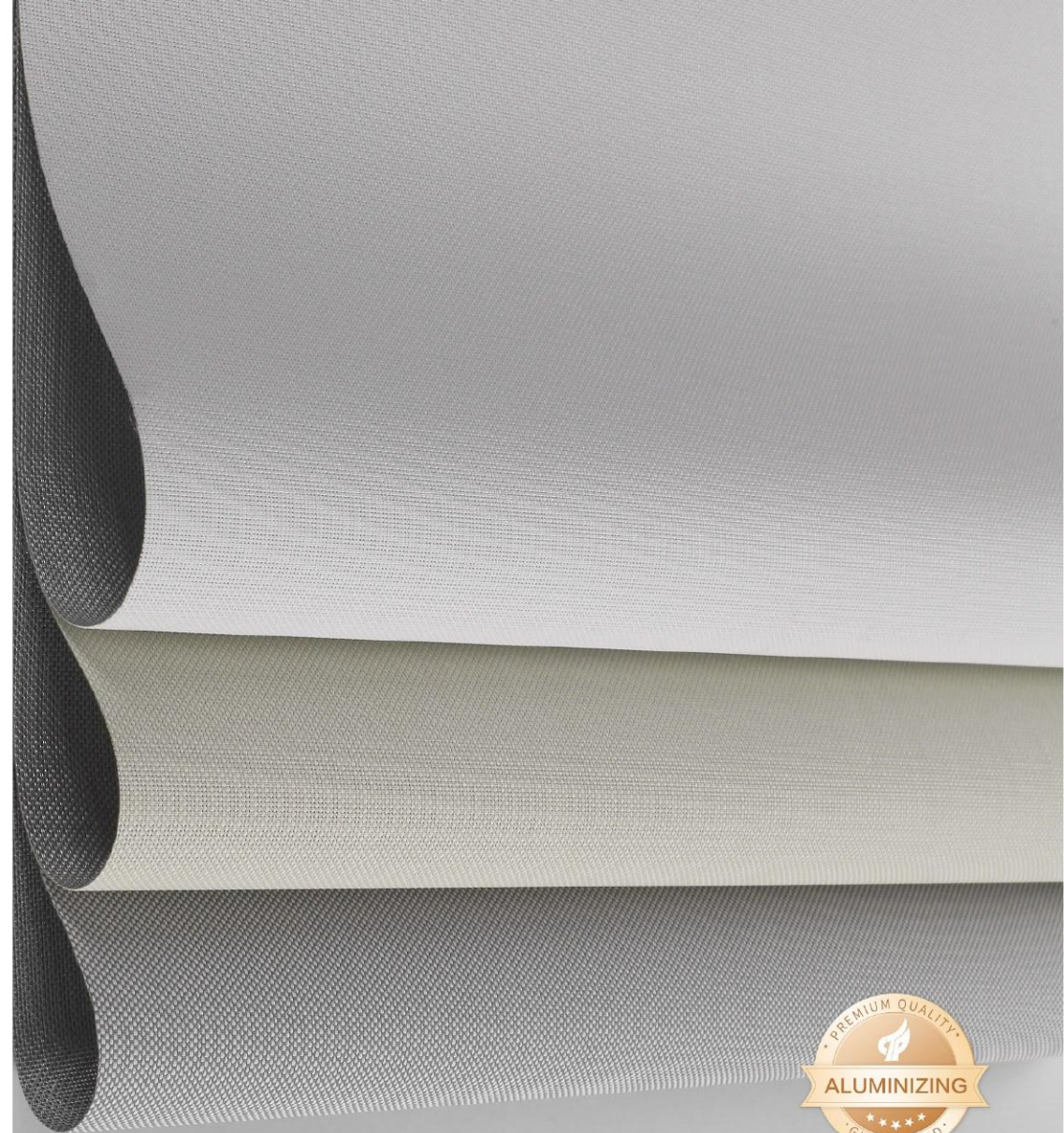
82155A



82155B



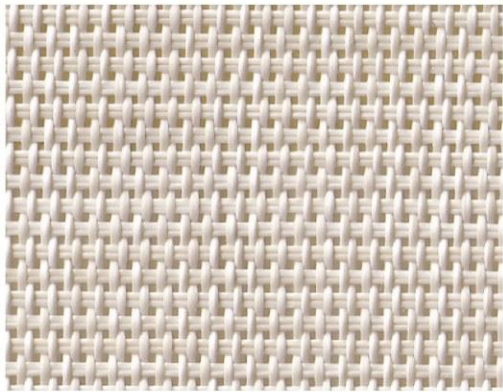
82155C



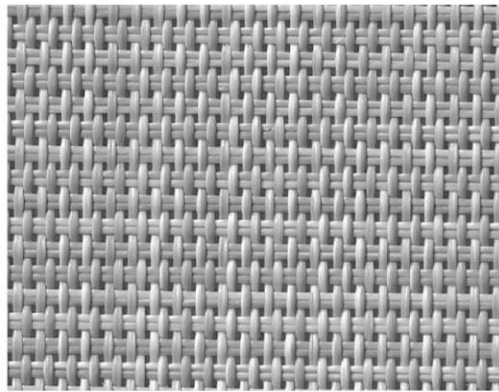
■ Fire Resistance NFPA 701



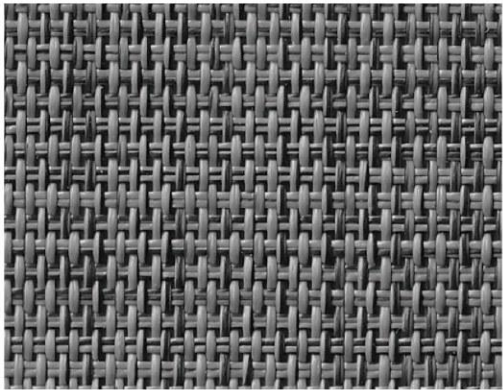
Number	Composition	Max Width	Thickness	Weight	5% openness factor
82155	35% Polyester + 65% PVC	300 cm	0.58mm ± 5%	420g/m ² ± 5%	



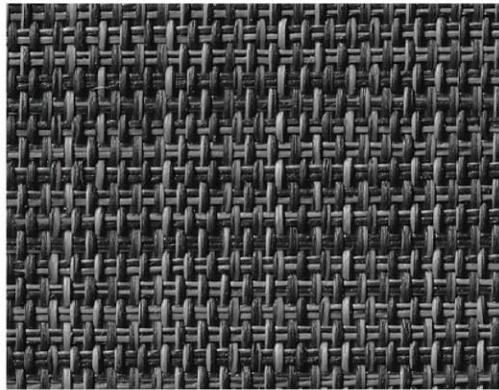
82088F



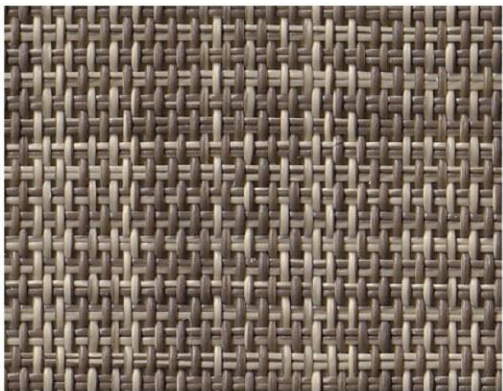
82088G



82088H



82088I

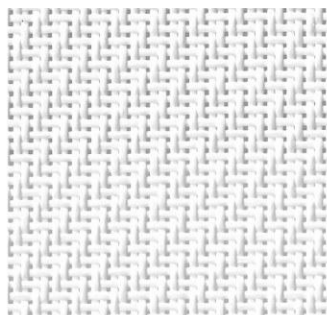


82088J



Number	Composition	Max Width	Thickness	Weight
82088	30% Polyester + 70% PVC	300 cm	0.73mm ± 5%	428g/m ² ± 5%

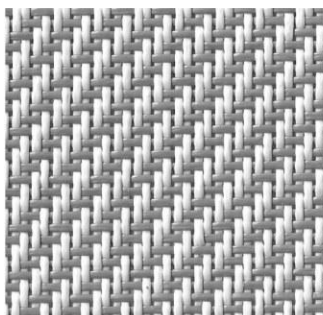
5%
openness factor



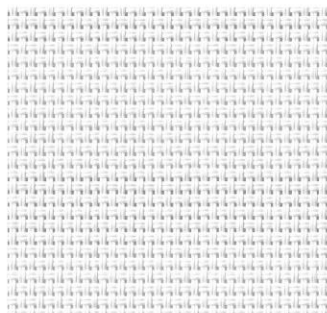
82025F



82025G



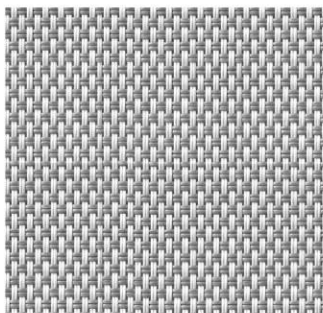
82025H



82025J



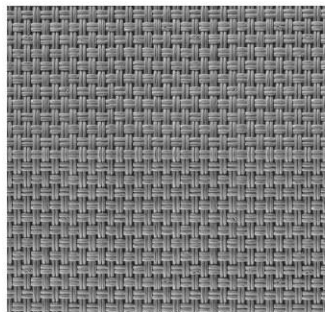
82025D



82025I



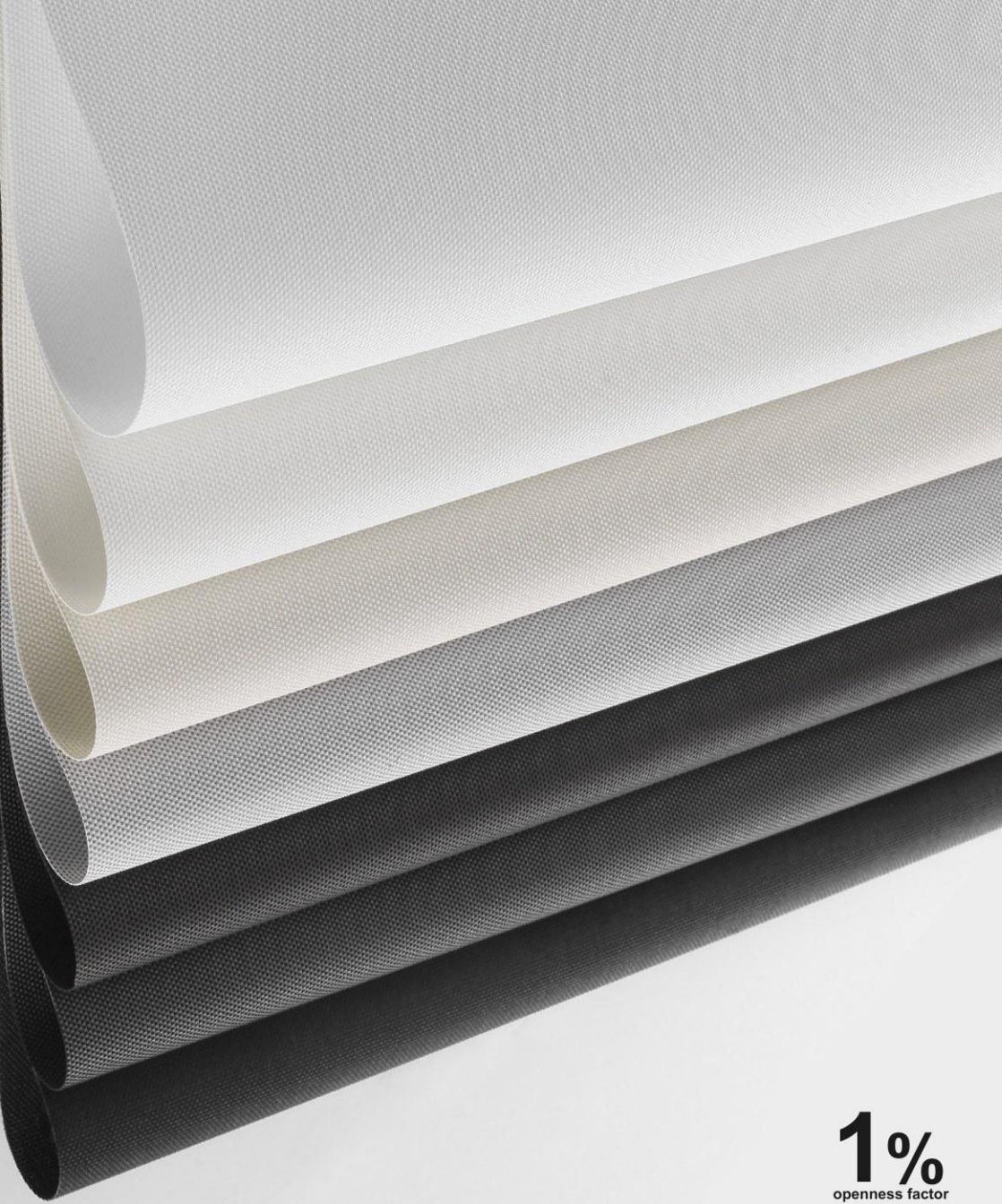
82025K



82025L



Number	Composition	Max Width	Thickness	Weight	3% openness factor
82025	30% Polyester + 70% PVC	300 cm	0.69mm ± 5%	476g/m ² ± 5%	



1%
openness factor

Number	Composition	Max Width	Thickness	Weight	Black Out Rate
82137	30% polyester +70% PVC	200/250/300cm	0.7mm ±5%	470g/m ² ±5%	semi blackout



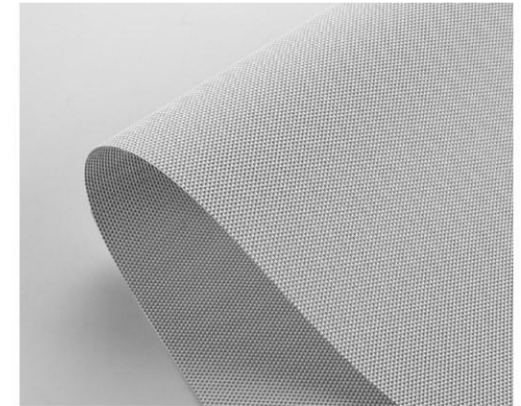
☀ 82137A



☀ 82137D



☀ 82137E



☀ 82137C



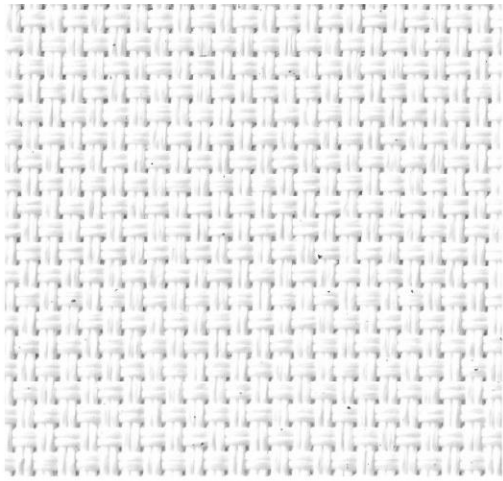
☀ 82137F Brown



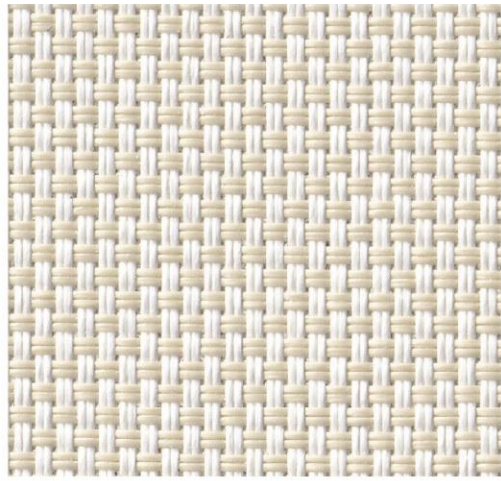
☀ 82137G Black-gray



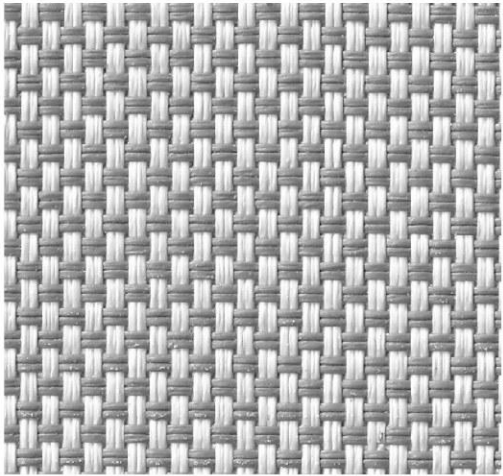
☀ 82137B Black



82006G



82006D

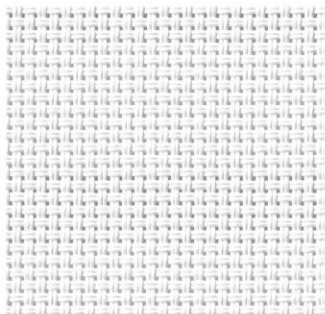


82006E

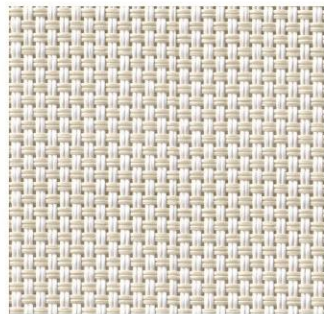


Number	Composition	Max Width	Thickness	Weight	Black Out Rate
82006	30% Polyester + 70% PVC	300 cm	0.84mm ± 5%	663g/m ² ± 5%	blackout

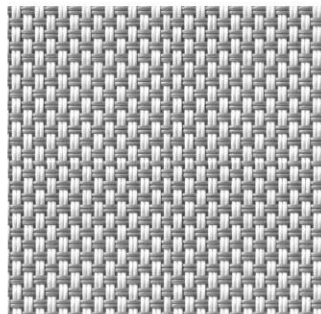
0% openness factor



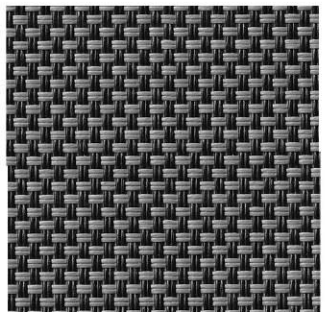
82006A



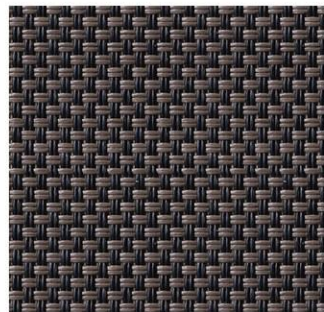
82006B



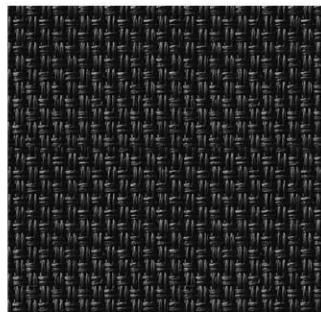
82006C



82006L



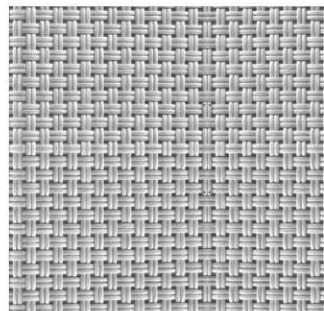
82006M



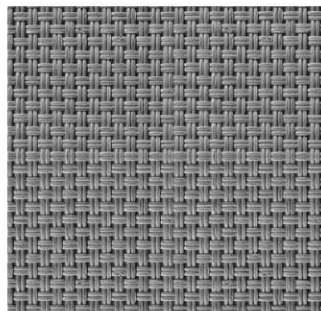
82006N



82006O



82006Q

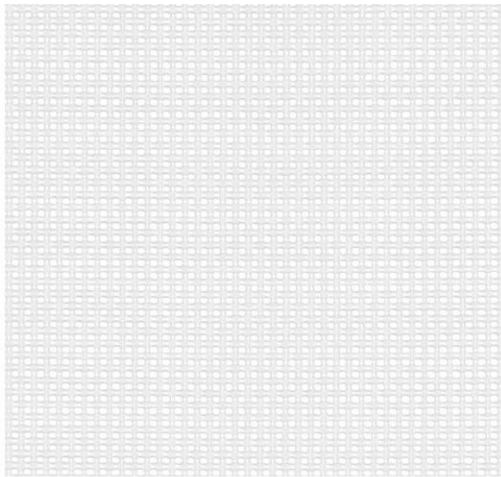


82006R



Number	Composition	Max Width	Thickness	Weight
82006	30% Polyester + 70% PVC	300 cm	0.75mm ± 5%	520g/m ² ± 5%

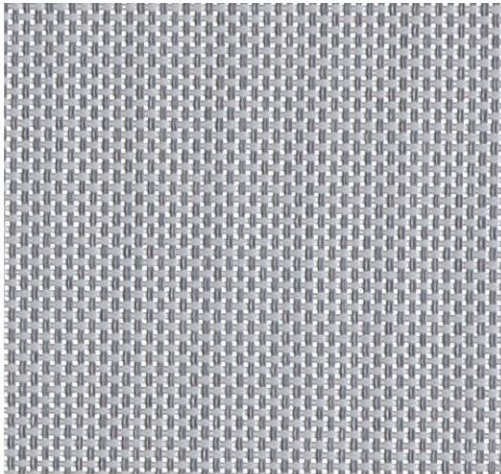
5%
openness factor



82006S



82006H



82006F



■ Fire Resistance NFPA 701

Number	Composition	Max Width	Thickness	Weight
82006	20% Polyester + 80% PVC	200 cm 250 cm 300 cm	0.54mm ± 5%	397g/m ² ± 5%

5%
openness factor



LEAD-FREE
HEAVY METAL FREE

FIREPROOF
B1 / NFPA 701

ANTI-BACTERIAL
ASTM G21

ANTI-STATIC
AATCC 115-2011

82151 series 0%

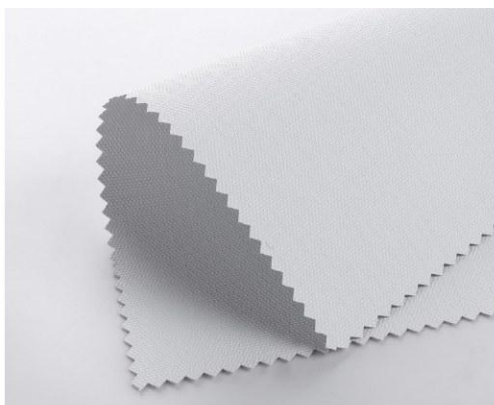
Composition: 25% Polyester + 75% PVC

Finished width: 250/300 cm

Weight per m²: 576g/m² ± 5%

Thickness: 0.69mm ± 5%

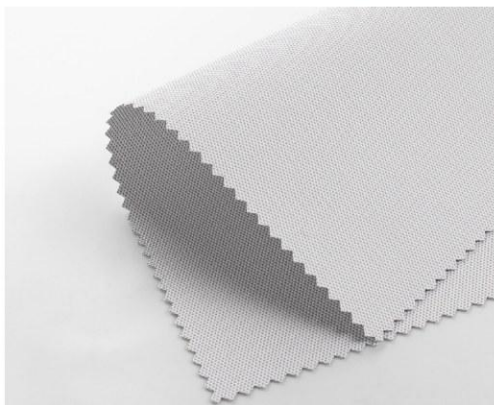
Fire Resistance NFPA 701



☀ 82151A



☀ 82151B



☀ 82151C



☀ 82151D



☀ 82151E

82154 series 0.5%

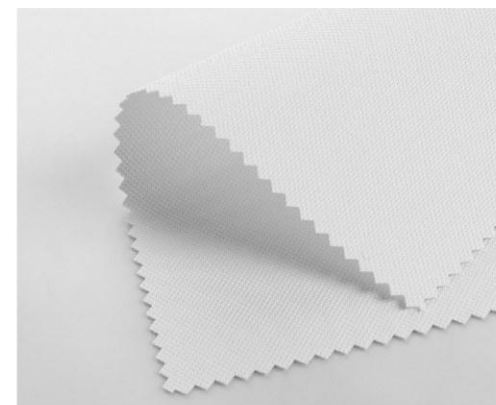
Composition: 25% Polyester + 75% PVC

Finished width: 200/250/300 cm

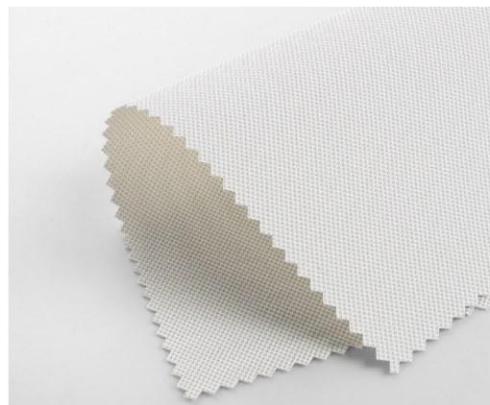
Weight per m²: 435g/m² ± 5%

Thickness: 0.54mm ± 5%

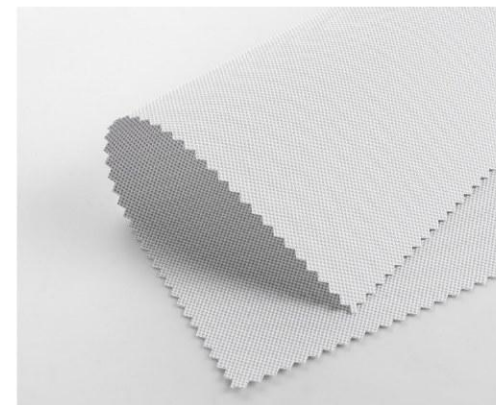
Fire Resistance NFPA 701



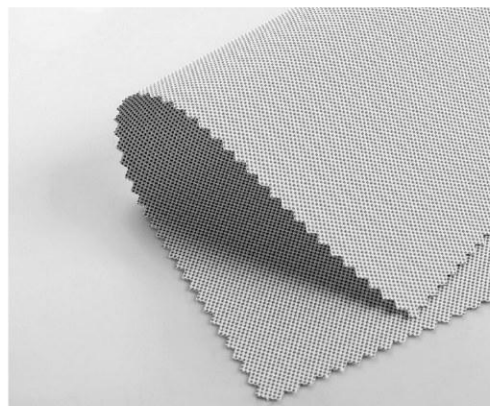
☀ 82154A



☀ 82154B



☀ 82154C



☀ 82154D



☀ 82154E